



## Case Study – Co-Working Space

**Thomas Ketterer**

Aircharge Partner  
Deutschland – Österreich – Schweiz

M DE: 0171 81 68 114  
T DE: 09154 911 80 25  
T AT: 0720 512 638  
T CH: 0325 113 864

W: [www.air-charge.de](http://www.air-charge.de)  
E: [thomas@air-charge.de](mailto:thomas@air-charge.de)

Skype: TK-Work



## CASE STUDY

London Executive Offices, or LEO, are London's foremost provider of 5-star luxury office space, meeting rooms, event space, as well as virtual office services for those requiring a central London presence, with flexible workspace, without the overheads. They offer state-of-the-art technology and services across nearly 40 locations in London.

Location: LEO Nova North, Victoria, London, UK.

Installation: May 2018

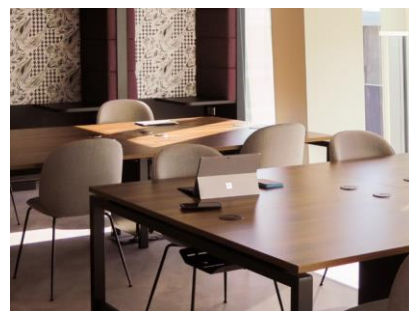
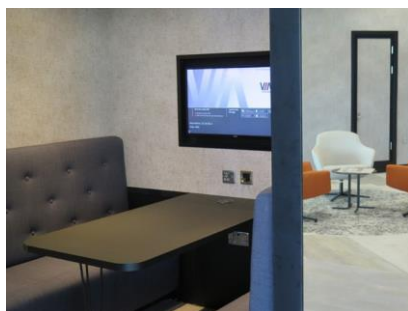
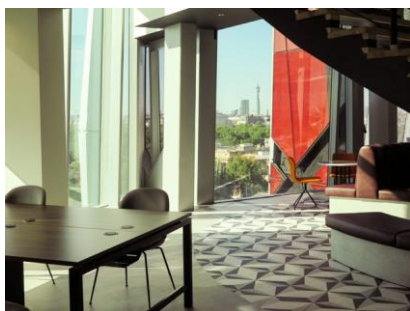
Product: Aircharge wireless surface charger, blacknylon.

Nº units: 26 installed in meeting pods, communal tables and individual desks.

### THE RISE OF CO-WORKING SPACES

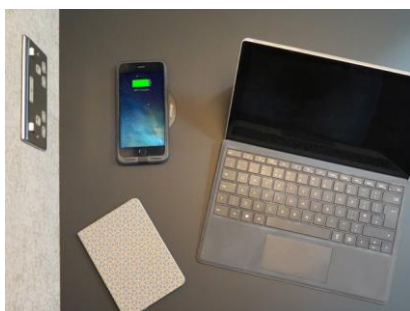
Driven by technology, the rise of self-employment and more flexible working styles, co-working office spaces are changing the way we are using office space.

The advance in technology in particular has been one of the main enablers of the success of the co-working space, allowing flexibility and possibilities for work space optimisation and a collaborative and effective use of facilities.



As competition between co-working providers increases, operators must be savvy as to how technology can differentiate their brands and keep attracting start-ups, fast-growing companies, freelancers and any other business that can benefit from this version of the modern workplace.

### WIRELESS CHARGING TECHNOLOGY TO SUPPORT FLEXIBLE WORKSPACES AND A MOBILE WORKFORCE



Recognising its members heavily rely on their phones throughout the day, both when in the office as well as onsite, LEO approached wireless charging leader Aircharge to provide a safe and convenient solution to allow them to keep their devices powered and connected without having to carry cables or powerbanks.

Aircharge develops Qi certified, Apple compatible wireless charging technologies for a seamless surface or subsurface integration into any desk or tabletop, allowing users to charge by simply placing their phone on top of the charger and thus providing more flexibility and choice to workers.

### EASY INSTALLATION

Deployment started with LEO's Nova North site in Victoria, where 26 wireless surface chargers were installed across meeting pods, communal tables and individual desks. With members frequently switching between collaborative, common and private areas and meeting rooms within the office space, Aircharge allows them to easily charge their phones, no matter which area of the office they are working from.

Aircharge has been engineered with a quick installation design that fits into 18-50mm thick desktops which allowed the chargers to be retrofitted into standard 80mm grommets drilled in the existing furniture.

Aircharge offers a range of bespoke textures and materials including veneer, leather and tempered Gorilla glass options. LEO opted for a classic black nylon charger for a premium finish and enhanced experience.



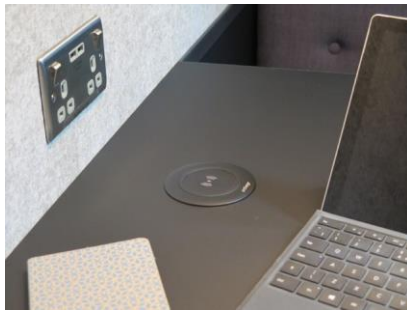
## FUTURE PROOF THE OFFICESPACE

Qi wireless charging is the universal standard for wireless charging, utilised in the latest devices from Apple, Samsung, LG, Sony, etc. and available in over 100 models.

Aircharge chargers come complete with the Aircharge 'Orb' adaptor, the world's first and only 'Made For iPhone' certified multi head connector with Micro-USB, Lightning and USB Type-C adaptors to charge non-Qi devices and accessories.

## DATA MANAGEMENT AND SERVICE INTEGRATION

Aircharge offers real time access to utilisation statistics, making it possible to map traffic, monitor space usage as well as locate users when in the venue. Integration with iBeacon, QR codes and digital signage gives the opportunity to offer integrated services including room booking and table service.



*'Aircharge is a great addition to our luxury office spaces, enhancing our clients' experience when visiting and making it easy to be powered up no matter which part of the office they're working from. Aircharge helps set us apart from our competition and is loved by clients and staff alike'*

Matthew Stackpoole, IT Co-ordinator.



## THE WIRELESS CHARGING PROVIDER OF CHOICE IN THE WORKPLACE



Aircharge provided LEO with full support throughout the implementation process, including placement recommendation, layout design, and installation services.

Manufactured using state-of-the-art, superior grade components for contract use, Aircharge offered LEO the connectivity and infrastructure to truly enable flexibility in the workplace and remove the hassle of managing charging cables.

## ENHANCE YOUR OFFICE EXPERIENCE WITH AIRCHARGE WIRELESS CHARGING

Take pride in offering the most advanced and modern wireless charging facilities in your workspace. When you install Aircharge in your meeting rooms, lounge, lobby or work stations, you provide a level of convenience that your employees and visitors will truly appreciate.

- Cable-free charging facilities.
- Seamless design integrated into furniture.
- Data analytics.
- Integrated services including member check-ins, meeting room booking, table ordering/table service.

